

COMPANY MILESTONE



2012

Established on 8 November 2012 to operate a high-standard networking business to distribute consumer products domestically and internationally



2013

Launched the company's first product line, Nutrinal, and Body Cheer personal care products



2014

Registered Successmore Being Laboratory Company Limited ("SML"), a subsidiary company



2016

Established subsidiary companies in Vietnam and Cambodia named Successmore Being Vietnam Co., Ltd. and Successmore Being (Cambodia) Co., Ltd., respectively.



2019

Converted Successmore Being Company Limited into Successmore Being Public Company Limited and listed its common stocks on the Stock Exchange of Thailand



2018

Established SCM Spirit (Myanmar) Co., Ltd. ("SPM") in Myanmar as a subsidiary within the Group



2017

Appointed a distributor in Laos, Success More-Laos Sole Co., Ltd.

Sold all shares of Successmore Being (Cambodia) Co., Ltd. and Successmore Being Vietnam Co., Ltd. to third parties unrelated to the company



2020

Invested in acquiring shares of SCM Innovative Company Limited ("SMI"), a registered company in Thailand from existing shareholders

On September 8, 2020, the company's shares were traded on the Stock Exchange of Thailand under the name "SCM"



2021

Issued 200,000,000 units of SCM-W1 to the existing shareholders in proportion of shareholding ratio of 3 : 1 by free of charge, exercise price 9 baht of 2 years, due date in December 22, 2023

Increased the registered capital by 100,000,000 baht, resulting in a new registered capital of 400,000,000 baht, with a par value of 0.50 baht per share to support the issuance of SCM-W1



2022

Successmore Being Laboratory Co., Ltd. (subsidiary company) changed its name and business objectives to Chadhai Leasing Co., Ltd. for leasing business operations

Increased the registered capital from 5 million to 100 million baht



2024

Registered Healthi More Company Limited ("HTM"), a subsidiary company in the group of companies with a registered capital of 5.00 million Baht to operate online business selling food supplements, healthcare products, and consumer products.



2023

Issued 80,000,000 units of SCM-W2 to the existing shareholders in proportion of shareholding ratio of 7.5 : 1 by free of charge, exercise price 2 baht of 2 years, due date in June 27, 2025.

Increase the registered capital by 47,800,000 baht to a new registered capital of 447,800,000 baht with a par value of 0.50 baht per share to support the issuance of SCM-W2.



2025

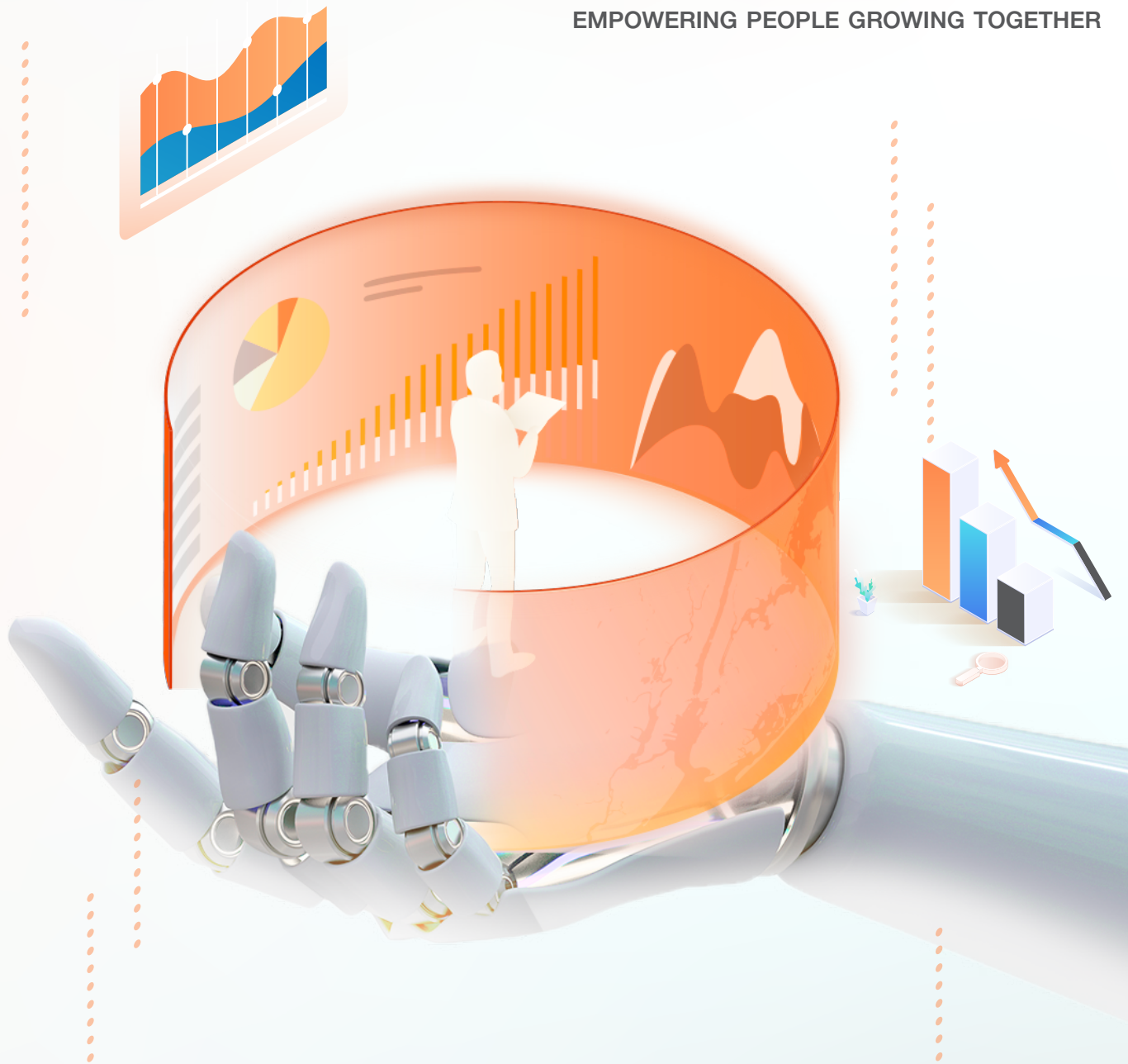
In January 2025, the registered capital was reduced to 443,556,450 baht and the paid-up capital was reduced to 298,151,400.50 baht.

BRANDS UNDER SCM



Factsheet
6M2025

EMPOWERING PEOPLE GROWING TOGETHER



Disclaimer

The information contained herein is being furnished on a confidential basis for discussion purposes only and only for the use of the recipient, and may be subject to completion or amendment through the delivery of additional documentation. Except as otherwise provided herein, this document does not constitute an offer to sell or purchase any security or engage in any transaction. The information contained herein has been obtained from sources that Successmore Being Public Company Limited considers to be reliable; however, Successmore Being Public Company Limited makes no representation as to, and accepts no responsibility or liability for, the accuracy or completeness of the information contained herein. Any projections, valuations and statistical analyses contained herein have been provided to assist the recipient in the evaluation of the matters described herein; such projections, valuations and analyses may be based on subjective assessments and assumptions and may utilize one among alternative methodologies that produce differing results; accordingly, such projections, valuations and statistical analyses are not to be viewed as facts and should not be relied upon as an accurate representation of future events. The recipient should make an independent evaluation and judgment with respect to the matters contained herein.

NATURE OF BUSINESS



NETWORK MARKETING

Networking business to distribute nutritional products and consumer products both domestically and internationally which is the main business of the group of companies

The company group will focus on operating a network business with a compensation policy in an appropriate "Compensation Business Plan" form and focuses on the development of businessmen.

CONSULTING SERVICES FOR NETWORKING BUSINESS OPERATION AND SEMINAR ORGANIZATION

Consulting services business in operating networking business is operated by SPT and SPM to provide network business-related advice.



MANUFACTURING BUSINESS

SMI is a company's manufacturing plant for food and supplements, Helping to reduce the cost of production in the long run due to the scale (Economy of scale), increasing flexibility in production planning and management. This helps reducing dependence on outsourcing contractors.



E-COMMERCE BUSINESS

The e-commerce business operates under Healti More Co., Ltd. (HTM), distributing dietary supplements, health care products, and general consumer goods. The company sells these products across multiple online platforms, such as its website, TikTok, Facebook, Shopee, Lazada, and Line OA. The business covers the entire process, from product delivery and payment solutions to online marketing.



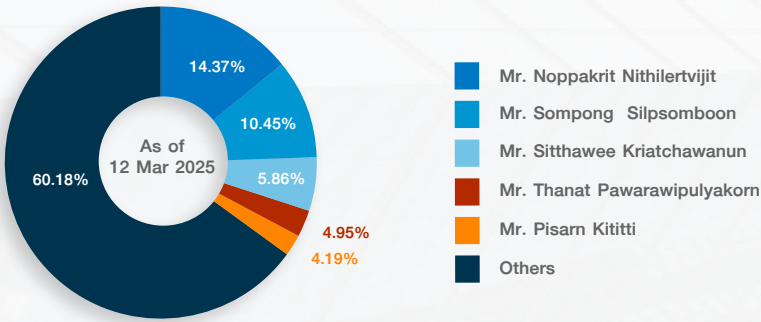
LEASING BUSINESS

Leasing Business operates under Chadhai Leasing Co., Ltd. (CHL), whose main business is car hire purchase loans. SCM's nationwide branch area is used as a channel to communicate with all member networks. Currently, the Company has stopped providing additional car hire purchase loans and focuses on managing existing receivables to maximize efficiency. In 2024, Chadhai Leasing Co., Ltd. start providing agricultural drone hire purchase loans to farmers to create opportunities to access modern agricultural machinery and upgrade farmers to become Smart Farmers, as well as to help increase production efficiency and increase agricultural productivity.

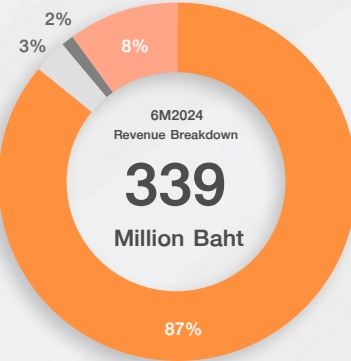
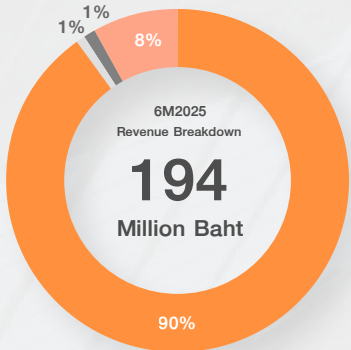
COMPANY GROUP'S STRUCTURE



MAJOR SHAREHOLDERS

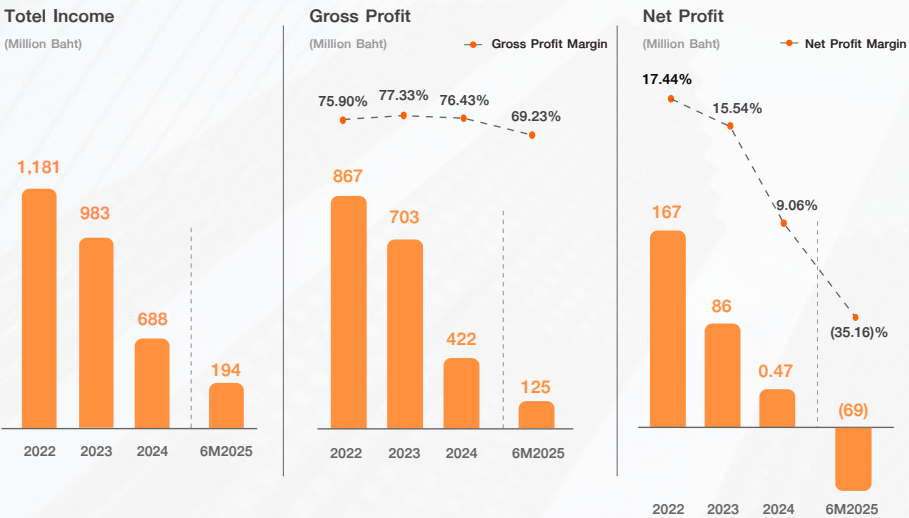


INCOME STRUCTURE

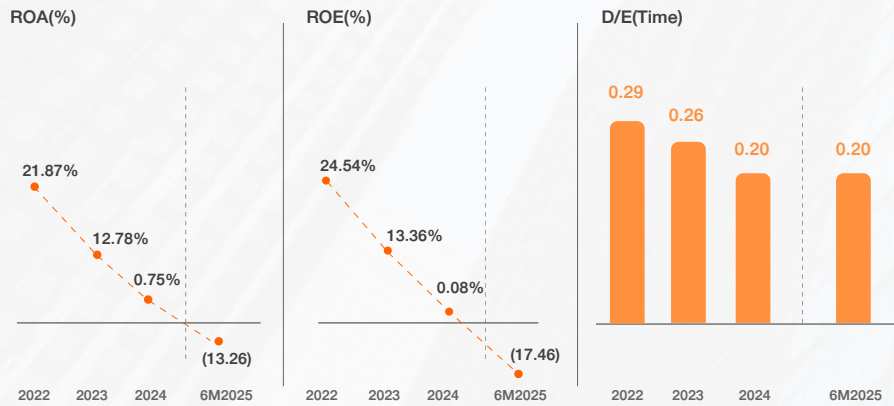


- Sales through businessmen
- Other income
- Revenue from sevicees
- Sales through distribution agents

FINANCIAL HIGHLIGHTS



FINANCIAL RATIO



STOCK INFORMATION

As of 14 Aug 2025

SCM

0.34

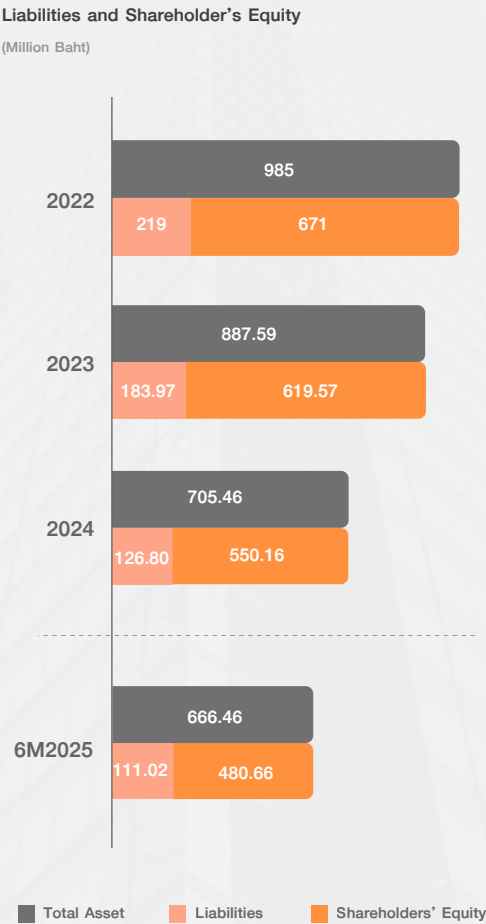
Baht

DIVIDEND POLICY AND PAYMENT

The company has policy to pay out dividends at a rate of no less than 50% of net profit after deducting corporate income tax for the separate financial statement and after allocating all types of allowances required by law.

Operation Period	Type	Dividend per share	Unit	EPS(Baht)
01 Jan 2024 - 30 Jun 2024	Cash	0.05	Baht	0.06
01 July 2023 - 31 Dec 2023	Cash	0.05	Baht	0.08
01 Jan 2023 - 30 Jun 2023	Cash	0.10	Baht	0.11
01 July 2022 - 31 Dec 2022	Cash	0.11	Baht	0.14
01 Jan 2022 - 30 Jun 2022	Cash	0.15	Baht	0.17
01 July 2021 - 31 Dec 2021	Cash	0.17	Baht	0.20
01 Jan 2021 - 30 Jun 2021	Cash	0.12	Baht	0.14

INCOME STRUCTURE



52-week Low-High :
0.28 - 3.94 Baht
Free Float (12 Mar 2025) :
66.74 %

Market Capitalization :
203 Million Baht